

Linea FC

Front loading dishwashers



designed for hygiene

Comenda: a history of technological innovation

The founding company of the Ali group, Comenda has been synonymous with the best in professional dishwashing equipment for over 40 years. One of the industry's top players both in Europe and worldwide, Comenda manufactures and markets more than 200 dishwashing solutions, from the smallest glasswashers for bars through to large automated continuous flow systems for restaurants, hospitals, canteens and in-flight catering. Comenda also designs and installs customized solutions for individual space and workload specifications.



designed for hygiene

Hygiene design takes quality beyond the dimension of product form. At Comenda, designed for hygiene means form plus technology plus functionality. Comenda's strength is its attention to every last detail, to provide superior washing solutions that comply with the severe hygiene standards required in public catering. The Linea FC ensures maximum hygiene thanks to the deep-drawn tank with rounded corners and external heater. The re-styled control panel, with new symbols and colours, simplifies operations and maximises product safety.

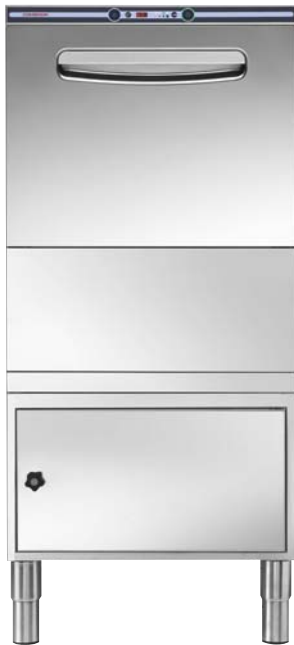
Linea FC

ergonomics and functionality

For Comenda, ergonomics means easy to use. Ease of use increases productivity and improves personell safety. The FC's double walls which help prevent dispersion of heat and reduce noise as well as the door mechanism which has a half-open setting to allow drying, reflect our design team's respect for the final user.

respect for the environment, respect for people

Comenda has made significant progress in limiting consumption, with a focus on sustainability that translates into respect for the environment and respect for people without sacrificing hygiene efficiency. The Linea FC products keep running costs down by using less water and detergent during the wash cycle and cutting energy consumption. Silent machine operation and insulated panels ensure pleasant conditions in the workplace.



service at your doorstep

Continuous contact between production and service engineers is the key to effective support whenever maintenance is required: certainly, this is one of the distinguishing characteristics of Comenda's technical assistance. An extensive network of highly skilled service engineers provides full territorial coverage. Rapid turnaround on service calls and immediate availability of spare parts complete the Comenda offer and ensure excellent quality of service.



the models

Linea FC front loading dishwashers are ideal for most catering dishwashing needs.

Adjustable working capacity according to dish load and user settings. The completely programmable electronic versions let the user customise cycles according to need. For glasses, for example, a special low-temperature cycle can be set.

FC3M

- mechanical version
- clearance 300mm
- two washing cycles
- stainless steel filter on the whole tank surface with DYNAMIC filter

FC3E

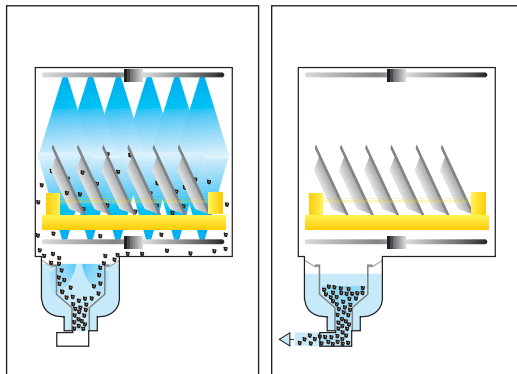
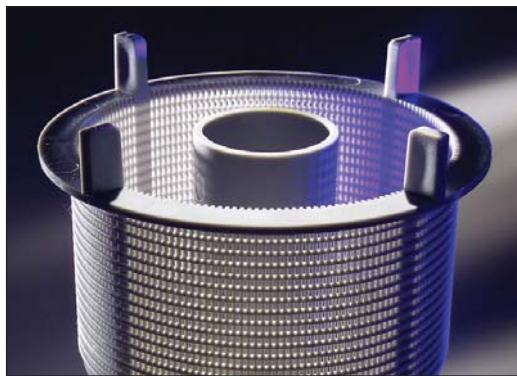
- electronic version with self diagnosis system
- clearance 300mm
- four washing cycles
- stainless steel filter on the whole tank surface with DYNAMIC filter
- RCD
- HPS

FC4M

- mechanical version
- clearance 400mm
- two washing cycles
- stainless steel filter on the whole tank surface with DYNAMIC filter

FC4E

- electronic version with self diagnosis system
- clearance 400mm
- four washing cycles
- stainless steel filter on the whole tank surface with DYNAMIC filter
- RCD
- HPS



FC44E

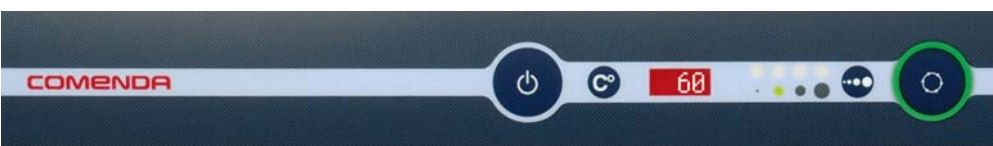
- electronic version with self diagnosis system
- clearance 400mm
- four washing cycles
- stainless steel filter on the whole tank surface with DYNAMIC filter
- RCD
- HPS
- stand alone execution with basement

FC4EHRT

- dumper version, electronic, with self diagnosis system
- clearance 400mm
- four washing cycles
- stainless steel filter on the whole tank surface with DYNAMIC filter
- RCD
- HPS

the electronic version

- The new electronic board provides easy machine process management:
- separate wash, pause, rinse time and temperature adjustment for each cycle
 - manual or automatic wash cycle start
 - built-in end of the day self-cleaning cycle
 - digital wash and rinse temperature display
 - built-in operating self-diagnosis
 - HPS settings (Hygiene Plus System)
 - multifunction color codes push button



plus

hygiene

- Deep drawn tank with rounded corners: ensures maximum hygiene.
- Heating element outside of the wash tank.
- Vertical self-draining wash pump: permits complete wash water draining during tank emptying.
- External wash column.
- **WRIS (Wash+Rinse Integrated System):** innovative, patented system consists in having two separate rows of wash nozzles per wash arm with a row of rinse nozzles in the middle. The double row creates two separate water blades hitting the dishware simultaneously. This notably increases the contact time between water and dishes and results in highly effective cleaning action.
- Smooth rack support guides moulded from the tank itself.
- Termo Stop: guarantees rinse cycle start only with 85°C booster temperature.
- RCD Rinse Control Device: guarantees constant 85°C water temperature during the entire rinse cycle even with low water pressure. RCD ensures compliance with stringent WRAS backflow-protection regulations.

work reliability and safety

- Double skin execution on all models. Helps the machine to retain heat, which keeps energy costs down and improves washing results.
- Built-in rinse aid injector: guarantees excellent drying results.
- Complete tank fill and heating automation: reduces user intervention to a minimum.
- Safety micro switch: prevents flooding if the machine is opened during use.
- Non-return valve: prevent dirty water backflow.
- Safety thermostat on booster heater: stops operations without water.
- Anti noise filter: prevents reception interference for radio/TV appliances.
- Automatic water softener that automatically regenerates resins at regular intervals during the wash cycle.
- Counterbalanced door with outer springs.

installation flexibility and ease

- **MULTIPOWER:** this revolutionary feature means this machine series can be powered by a 230V or a 400V connection, singlephase or threephase. In addition the total load can be easily adjusted according to customer requirements.
- Constructed for quick and easy maintenance.
- **QHS (Quick Heating System):** reduces start-up time, the booster water is used for tank fill.
- **DYNAMIC filter,** improves washing results by collecting and then evacuating solid food particles from the wash tank after each cycle.

HPS (HACCP data system)

This system by means of a RS 232 serial port, is able to transmit to a printer or PC, all data regarding machine program to assure correspondence to HACCP requirements.



Linea FC	FC3M FC3MA	FC3E FC3EA	FC4M FC4MA	FC4E FC4EA	FC4EHRT	FC44E FC44EA
machine dimensions WxDxH (mm)	600x600x720	600x600x720	600x600x820	600x600x820	600x600x820	600x600x1260
rack dimensions (mm)	500x500	500x500	500x500	500x500	500x500	500x500
wash cycles (sec.)	100-150	60-100-150-480	100-150	60-100-150-480	60-100-150-480	60-100-150-480
theoretical output (rack/h)	36-24	60-36-24-8	36-24	60-36-24-8	60-36-24-8	60-36-24-8
clearance (mm)	300	300	400	400	400	400
wash pump (kW)	0,75	0,75	0,75	0,75	0,75	0,75
wash tank capacity (L)	14	14	14	14	10	14
tank heater (kW)	0,5	0,5	0,5	0,5	0,5	0,5
booster capacity (L)	7,5	7,5	7,5	7,5	7,5	7,5
water consumption per cycle (L)	3,2	3,2	3,2	3,2	10	3,2
booster heater (kW)	7	7	7	7	7	7
voltage	230V/50Hz 230V/3 50Hz 400V/3N 50Hz					
total power 230V (kW)	3,10	3,10	3,10	3,10	3,10	3,10
total power 400V (kW) 55°C	5,45	5,45	5,45	5,45	5,45	5,45
total power 400V (kW) 15°C	7,75	7,75	7,75	7,75	7,75	7,75
RCD	-	•	-	•	•	•
rinse booster pump	-/•	•	-/•	•	•	•
sanitising system	-	•	-	•	•	•
electronic control panel	-	•	-	•	•	•
built-in water softener	-/•	-/•	-/•	-/•	-	-/•
rinse aid dispenser	•	•	•	•	•	•
detergent dispenser	○	○	○	○	•	○
drain pump	○	•	○	•	•	•
drain height from floor (mm)	35	35	35	35	35	475
weight (kg)	46/52	46/52	46/52	46/52	46/52	62/68

- not available • standard ○ on request
(special voltages on request)

With the right to change technical details



Ali S.p.A.
Via Galileo Galilei 8
20060 Cassina de' Pecchi, Milano
T +39 02 95228.1
F +39 02 9521510
sales@comenda-ali.it
www.comenda-ali.it

900652/4-07

